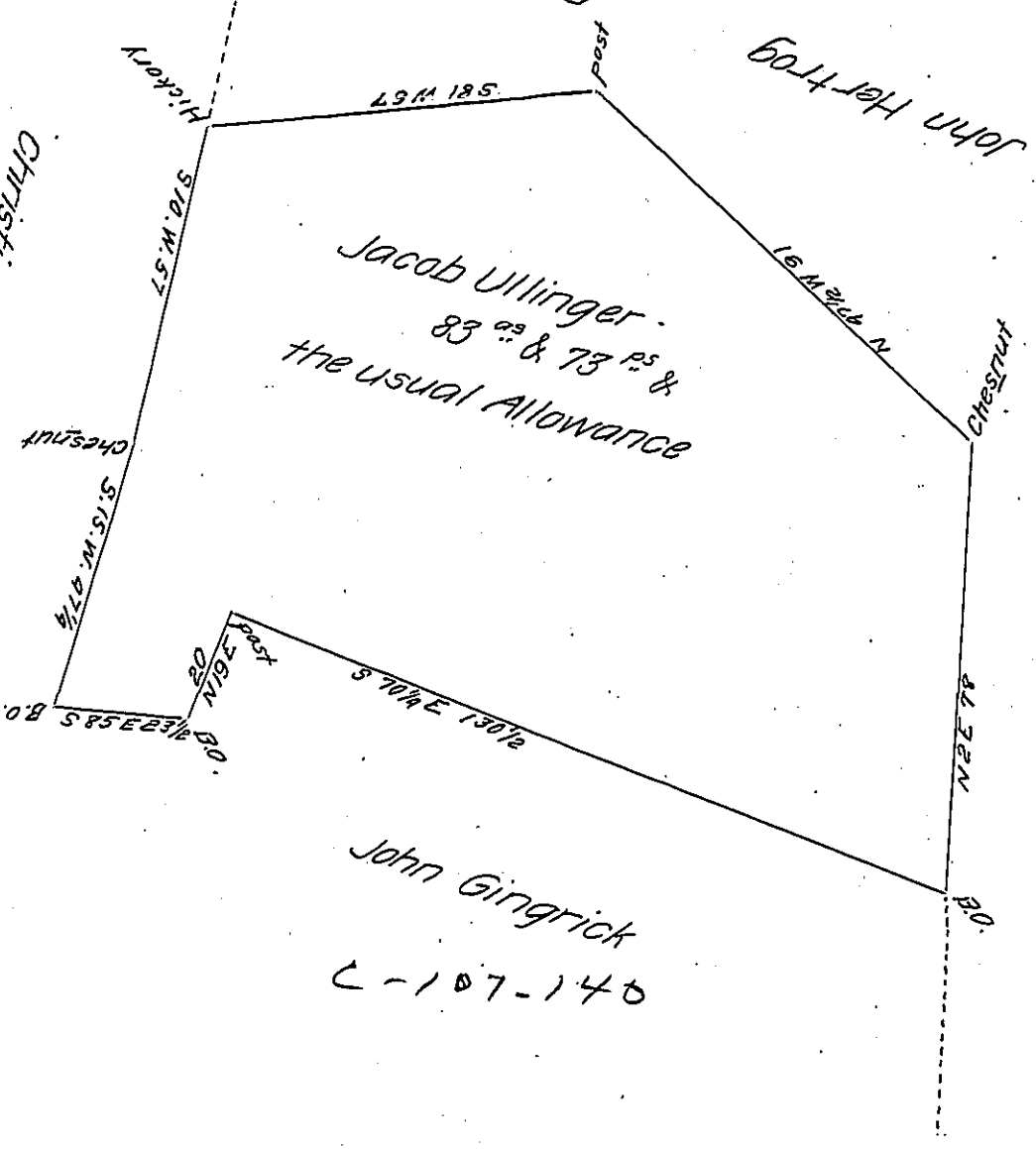


FORM NO 1.

Patented to Wm. T. Mumford A-11-31

C-58-164

CHRISTIAN GRAYBILL



C-234-175

John Gingrich C-107-140

A Draught of a Tract of land Situate in Warwick Township in the County of Lancaster Containing Eighty three Acres & Seventy three perches and the usual Allowance of Six P Cent for Roads &c Surveyed the 5<sup>th</sup> of June 1803 by Samuel Ensminger In Pursuance of a Warrant dated the 23<sup>rd</sup> of Sept A.D. 1752, Granted unto Jacob Ullinger.

To Andrew Porter Esq<sup>r</sup> Surveyor August the 22<sup>nd</sup> 1811

General. P<sup>r</sup> Jacob Hibshman D.S.

IN TESTIMONY that the above is a copy of the original remaining on file in the Department of Internal Affairs of Pennsylvania, made conformably to an Act of Assembly approved the 16th day of February, 1833, I have hereunto set my Hand and caused the Seal of said Department to be affixed at Harrisburg, this Ninth day of March 1907

*George D. Brown*  
Secretary of Internal Affairs.